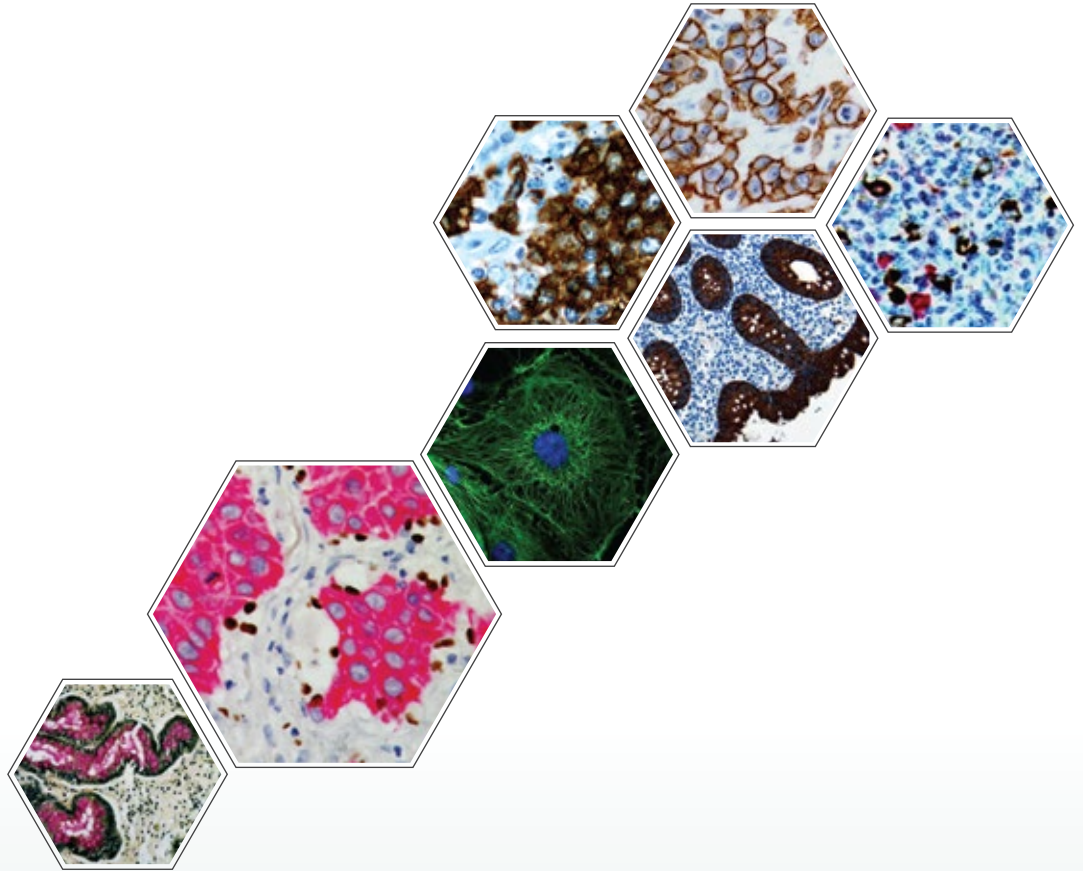


*i*6000TM ELITE Rx

Multifunctional Staining System for Research



Accelerate your research
All-in-One
IHC, IF, Multiplexing & Special Stains

Key Features & Benefits



Accelerate the Pace of Discovery

- High Throughput with a capability of staining 200 slides in 8 hours
- Fully open system to automate any manual protocol
- Multi-functional system performs multiplex IHC, IF and Special Stains
- Multi-format specimen analysis - Frozen, FFPE, Cell Preparations, Smears, and FNAs
- Simultaneous optimization of up to 60 assay parameters
- Unattended overnight run option

Flexible, Safe and Easy to Use

- Pre-optimized ready to use or user defined reagents
- Liquid level sensor for accurate reagent dispensing
- Multiple slide processing options - Random, Continuous and STAT
- Disposable pipette tips - eliminates cross contamination
- Store customized protocols for future use

Open Intuitive Software

- Customize protocols by editing individual slide processing parameters
- Edit and fine-tune pre-defined/stored protocols
- Audio and Visual alerts at every step for manual intervention
- Real-time slide map including time to completion
- Pause the run at any step for manual intervention

Customized Reporting System

- Run Parameters, reagent expiration dates and specimen used
- Reagent inventory management

The System



Liquid Level Sensor

- Ensures adequate reagent in the vials to perform staining
- Eliminate false negatives



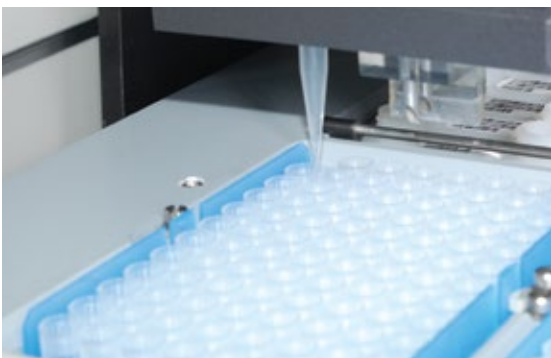
Removable Reagent Racks (2x30 vials)

- Offers quick and convenient storage of reagent vials
- Enables multiple staining protocols to be carried out in a single run



Disposable Pipette Tips

- Eliminates cross-contamination of reagents



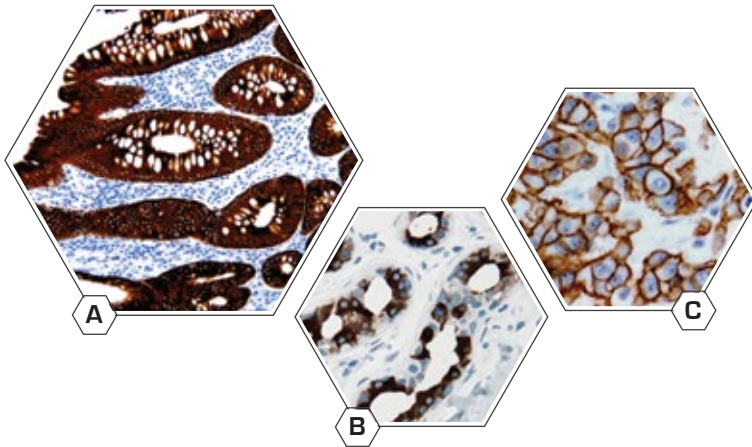
Removable Slide Racks with Splash Guard (5x12 Slides)

- Provides contamination free staining



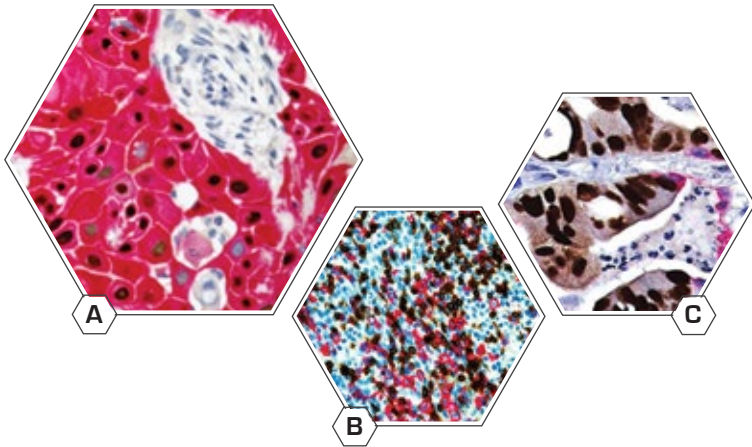
Accelerate your Research with Walk away Multifunctional Staining System

IHC

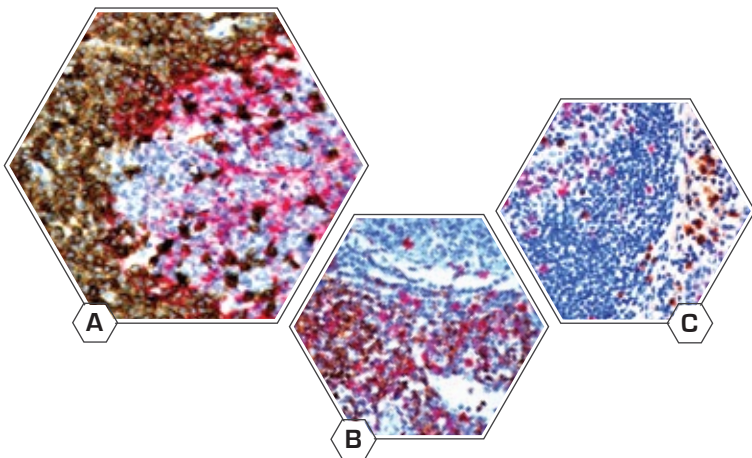


- A. Anti-CK18
- B. Anti-GCDFP-15
- C. Anti-ErbB-2/Her2

Multiplex Stains



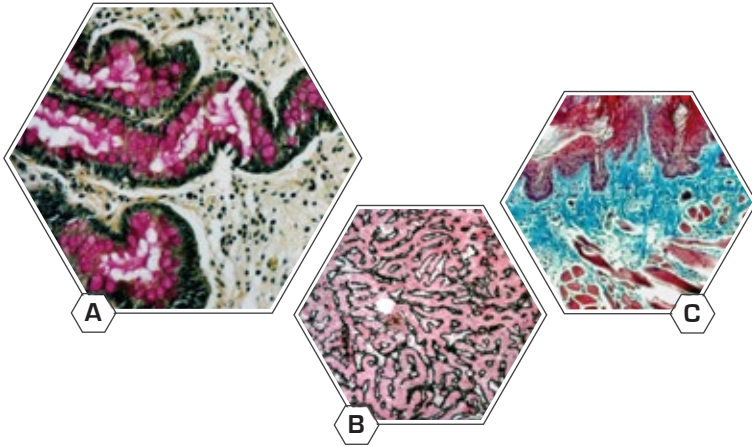
- A. SCC - Anti-p63 + Anti-CK5
- B. Tonsil - Anti-CD3 + Anti-CD20
- C. Metastatic Carcinoma in Lung
Anti-CDX2 + Anti-CK7



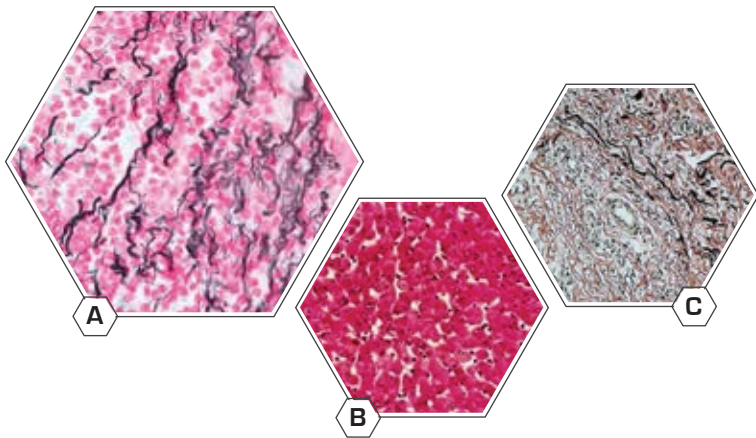
- A. anti-CD5 + anti-CD23
- B. anti-CD4 + anti-CD8
- C. anti-Ki67 + anti-Lambda

Accelerate your Research with Multifunctional Staining System

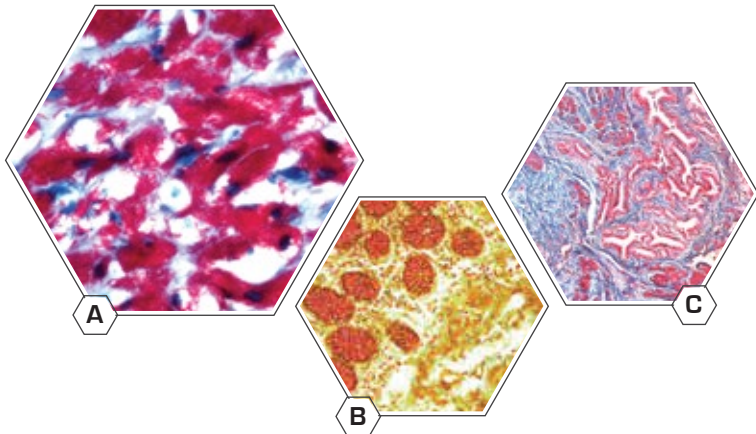
Special Stains



- A. Mucicarmine in Intestine
- B. Reticulin-Nuclear Fast Red in liver
- C. Masson's Trichrome in Skin



- A. Reticulin Nuclear Fast Red Stain
- B. PAS in Liver
- C. Elastic in Skin



- A. Acid-Fast Bacteria (AFB) Blue Stain
- B. Mucicarmine Stain
- C. Gomori's Trichrome Blue Stain

Integrated Workflow Solution

i6000™ ELITE Rx

Multifunctional Staining System for Research



EZ-Retriever® System

Pre-treatment and Antigen Retrieval System

- The i6000™ is designed to work seamlessly with EZ-Retriever providing Eco-friendly De-waxing, Rehydration and Antigen Retrieval
- DeWax, re-hydration and antigen retrieval in one step
- Optimized factory protocols
- User-defined protocols
- High throughput - 96 slides in 35 minutes
- Microwavable containers
- Programmable time and temperature controls
- Built-in probe measures solution temperature in real time
- Time saving and uniform heating
- Eco-friendly solutions

Contact Information:

Regulatory Claims & Technical Support at: support@biogenex.com

USA: 49026 Milmont Drive, Fremont, CA 94538, USA

T: +1-800-421-4149

F: +1-510-824-1490

India: SEZ Unit, Plot No.4, APIIC SEZ for Aerospace & Precision Engineering
Adibatla, R. R. Dist. - 501510, Telangana State, India

T: +91-9676777714

F: +91-40-66529200

China: Unit 511B, 5F Front Hall, Shanghai Exhibition Center
No.1000 Middle Yan An Road, Shanghai 200041, PRC, China

T: +86-21-2220-6680

F: +86-21-2220-6679

Italy: Via Savoldini, n.73, 24057, Martinengo, Bergamo, Italy

T: +39-036-398-6463



www.biogenex.com

e-mail: customer.service@biogenex.com