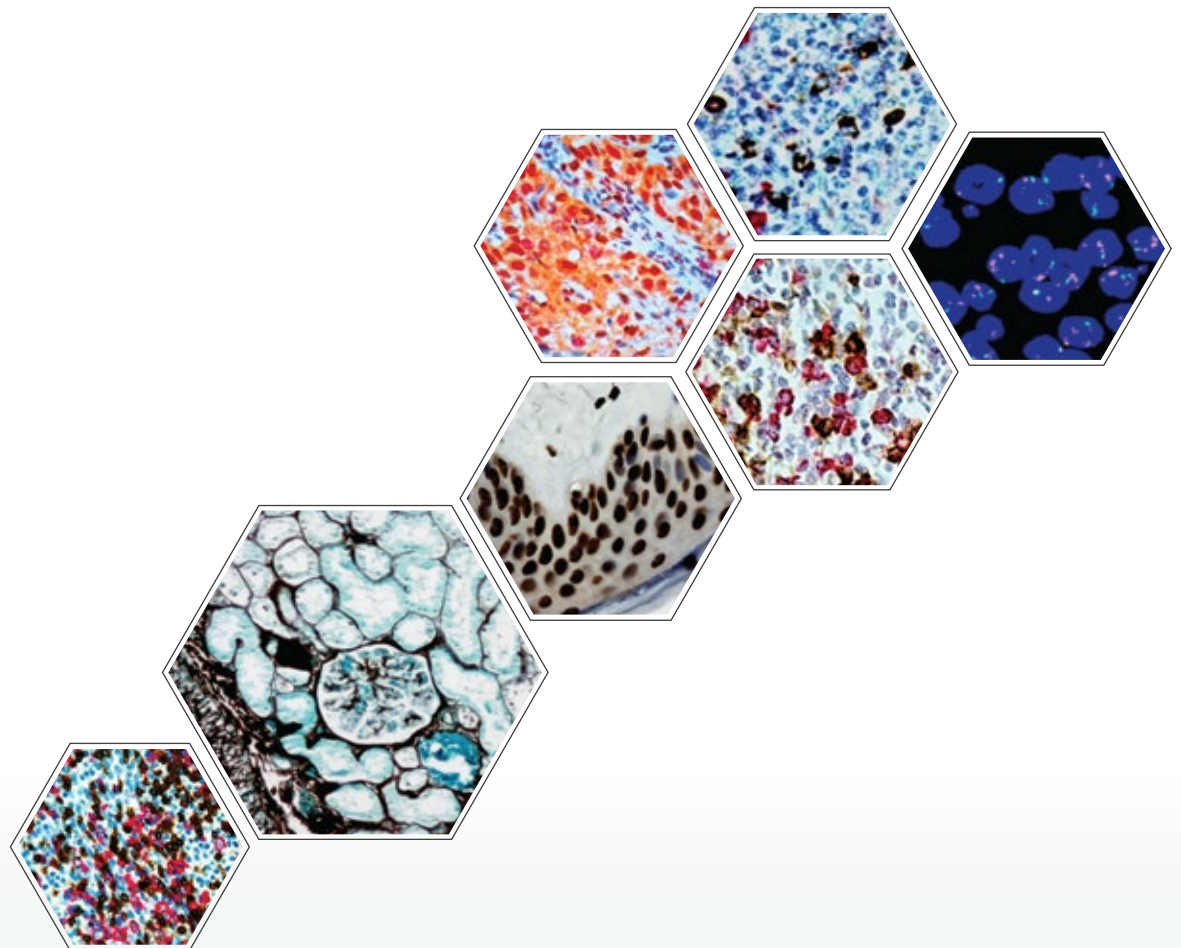


# Xmatrix<sup>®</sup> Infinity

*Infinite Possibilities...*

*...for Translational and Clinical Research*



**Optimize up to 40 assay  
Parameters in a Single Run**

**All-in-One**

**IHC, IF, SS, ISH, FISH,**

***In Situ* PCR, miRNA...**



## Key Features:

- Xmatrix<sup>®</sup> - a platform technology consisting of fully automated sample processing system, detection kits, antibodies and probes for molecular diagnostics, and translational & clinical research.
- Key technology differentiators are: forty independently controlled thermocyclable (PCR) work stations, a reaction micro-chamber at each position, reagent vials, and bulk-fluidics that enable complete automation of any slide based assays.
  - IHC, IF, SS, ISH, FISH
  - Co-detection and multiplexing of nucleic acid and protein biomarkers
  - *In situ* PCR, miRNA
- Xmatrix Infinity is designed for the life science research, and drug discovery & development. The system adapts and completely automates any manual protocol including denaturation, hybridization, stringency washes, counter stain and final coverslip.
- Multiplexing of ISH and IHC in the same specimen, a hallmark of the system, facilitates co-detection of multiple biomarkers while preserving the tissue morphology and spatial information. The *In situ* quantitative gene-expression profiling enables target identification, prioritization, selection and validation.

# Key Features & Benefits



## Accelerate the pace of discovery...

- Simultaneous optimization of up to forty parameters in a single run
- Co-detection of multiple nucleic acid and protein biomarkers
- Multiplexing of single or multiple specimens on a single slide
- Multi-format specimen analysis : Tissues - Frozen or FFPE, Cell preparations, Smears, Fine Needle Aspirates (FNA) and many more...



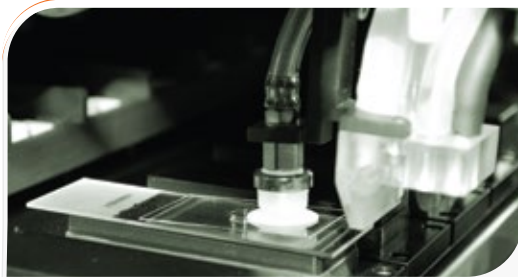
## ...With flexibility and control

- Intuitive software designed for ease of use and flexibility
- Automate any or all steps from baking through final coverslip
- Fully open system, use reagent of your choice
- Adapts and automates any manual slide based assays



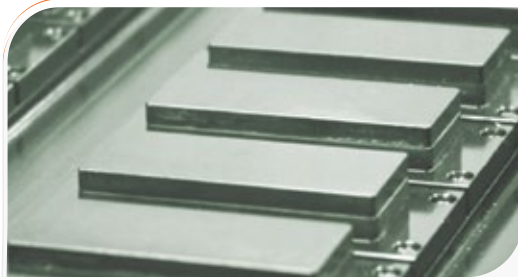
## Ease of Use

- Real-time slide map
- Intelligent bulk fluidics system
- Efficient waste management system
- Reports for inventory management and regulatory compliance



## Reaction Microchamber with Microfluidics

- Reaction microchamber - 5 µl for 18x18 to 8 µl for 25x40 slides
- Reduces micro-reagent usage up to 90%
- Even distribution of reagents on the specimen
- Overnight incubation/hybridization without drying of specimen



## eXACT™ Temperature Control and Thermo-cycling

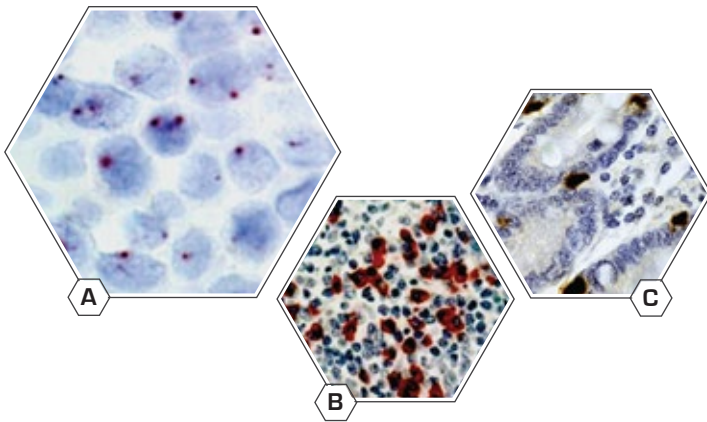
- Forty independently thermocyclable work stations
- Active heating and cooling on each slide - Ambient ⇌ 95°C in < 2 min
- Temperature uniformity across entire slide ±0.5°C
- Optimum operating temperature irrespective of the lab conditions
- Temperature range: ambient to 105°C



## On-board De-hydration and Final Coverslip

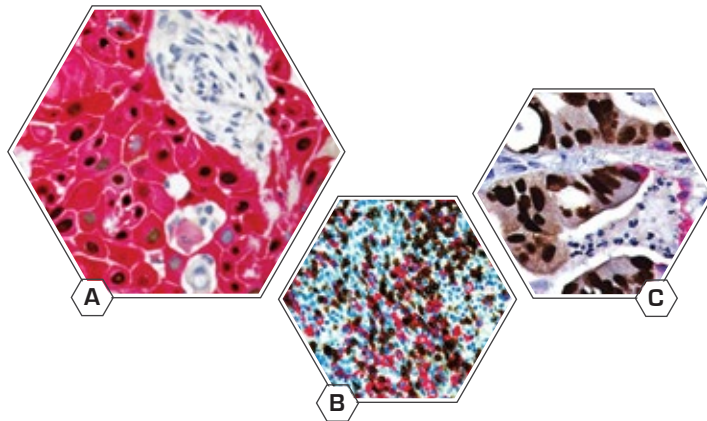
- Eco-friendly (Non-Xylene) dehydration & clearing
- Permanent mounting and coverslipping
- Curing and cooling

# Infinite Possibilities...for Translational and Clinical Research



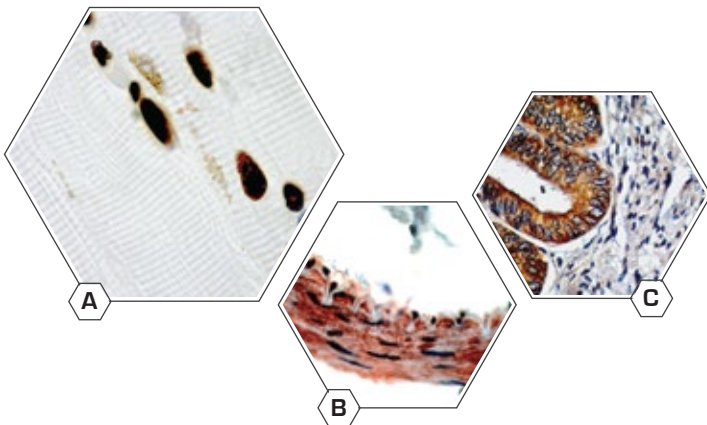
## ISH

- A. HPV Probe
- B. Kappa
- C. Cyclin D1



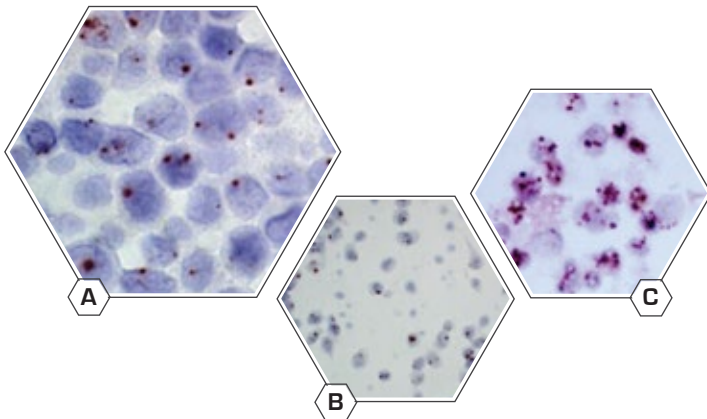
## Multiplex Stains

- A. SCC - Anti-p63 + Anti-CK5
- B. Tonsil - Anti-CD3 + Anti-CD20
- C. Metastatic Carcinoma in Lung  
Anti-CDX2 + Anti-CK7



## Hsa - microRNA

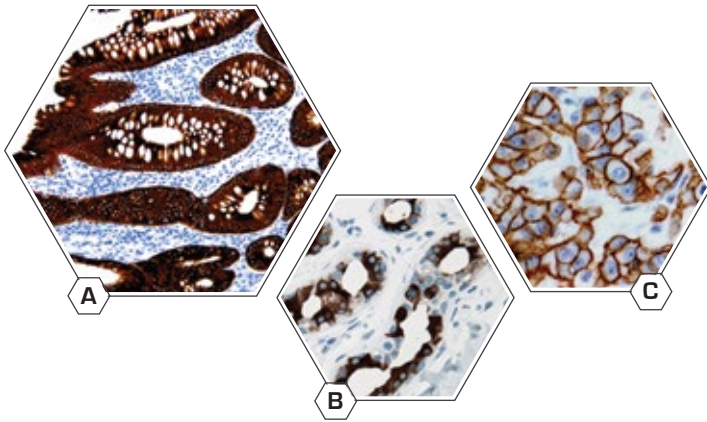
- A. miR-1 Human Skeletal Muscle
- B. miR -145 in Human Small Intestine
- C. miR-222 in Human Cervical Ca.



## Single Copy Gene Detection

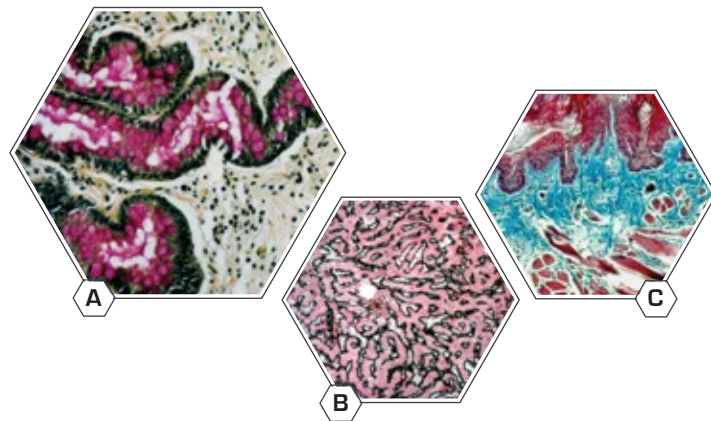
- A. SiHa
- B. HeLa
- C. Caski

# Infinite Possibilities...for Translational and Clinical Research



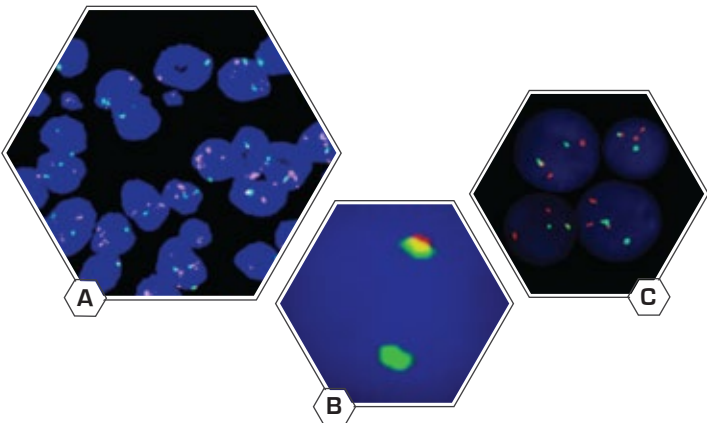
## IHC

- A. Anti-CK18
- B. Anti-GCDFP-15
- C. Anti-ErbB-2/Her2



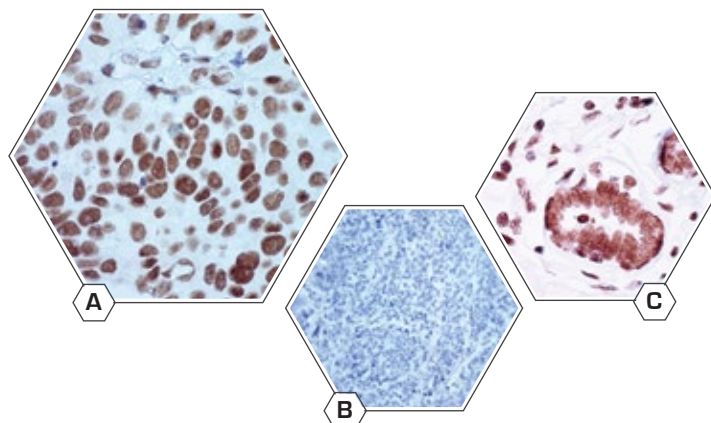
## Special Stains

- A. Mucicarmine in Intestine
- B. Reticulin-Nuclear Fast Red in liver
- C. Masson's Trichrome in Skin



## FISH

- A. FISH EGFR
- B. FISH Break apart ALK
- C. FISH HER2

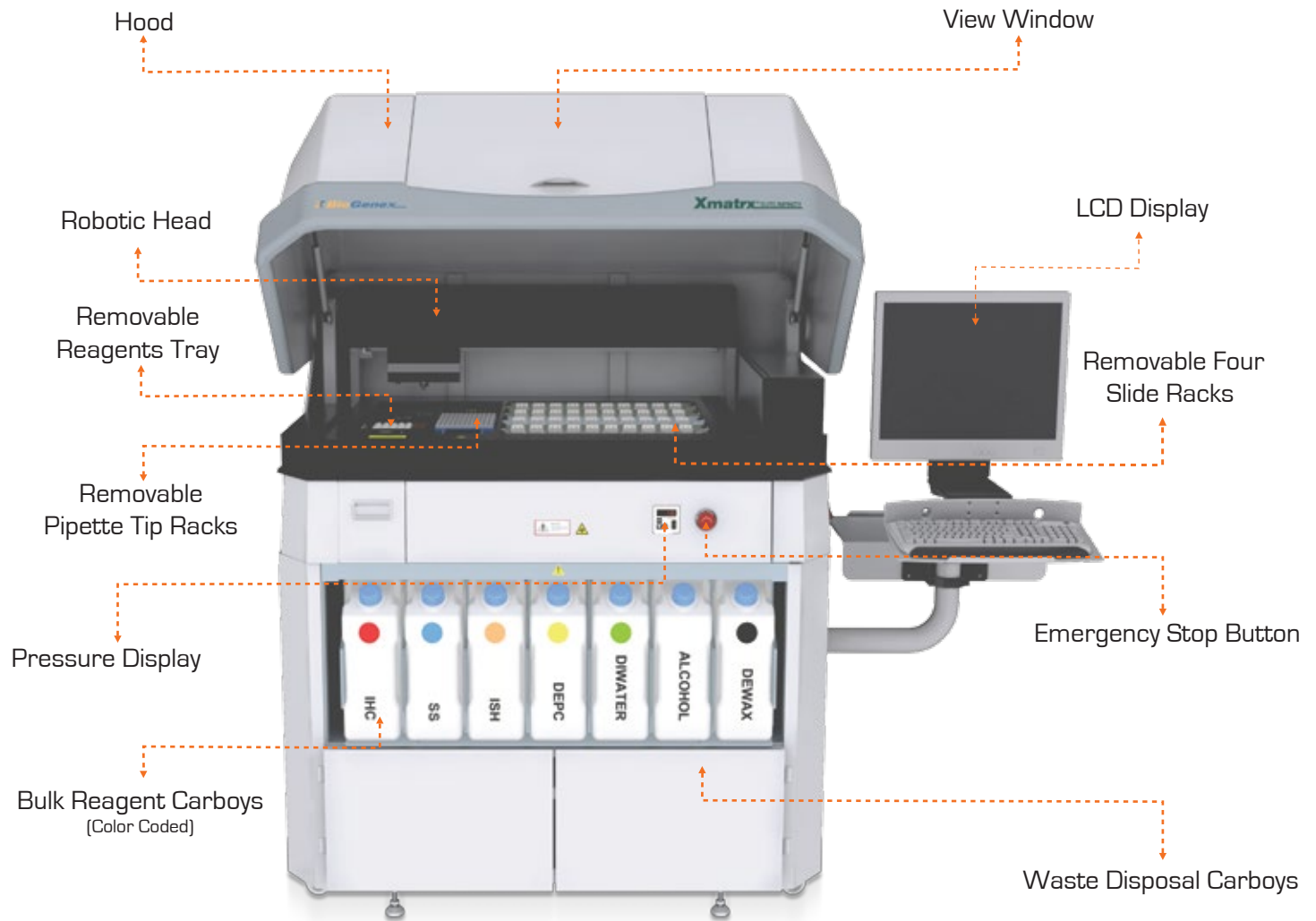


## In Situ PCR

- A. HPV 16 *in situ* PCR Ca. Cervix
- B. HPV 16 Negative Control
- C. GAPDH *in situ* PCR Normal Breast

# Xmatrix<sup>®</sup> Infinity

Infinite Possibilities...  
...for Translational and Clinical Research



## Contact Information:

Regulatory Claims & Technical Support at: [support@biogenex.com](mailto:support@biogenex.com)

**USA:** 49026 Milmont Drive, Fremont, CA 94538, USA

T: +1-800-421-4149

F: +1-510-824-1490

**India:** SEZ Unit, Plot No.4, APIIC SEZ for Aerospace & Precision Engineering  
Adibatla, R. R. Dist. - 501510, Telangana State, India

T: +91-9676777714

F: +91-40-66529200

**China:** Unit 511B, 5F Front Hall, Shanghai Exhibition Center  
No.1000 Middle Yan An Road, Shanghai 200041, PRC, China

T: +86-21-2220-6680

F: +86-21-2220-6679

**Italy:** Via Savoldini, n.73, 24057, Martinengo, Bergamo, Italy

T: +39-036-398-6463



[www.biogenex.com](http://www.biogenex.com)

e-mail: [customer.service@biogenex.com](mailto:customer.service@biogenex.com)